

# Tsela ea Leseli

## “Via Lucis”

Liqalo tse 14 ho tloha ka Paseka ho isa pentekonta

### Litaelo qalong ka ngoe:

1. Bitsa Ketsahalo
2. Sephetoane se sekhuts’oane  
**Moeta-pele: Rea u adora Krete ‘me rea u tlotlisa;**  
**Bohle: Hobane ka tsoho ea hao u re sitsa ts’epo le thabo, alleluia!**
3. Moeta-pele u bala palo e khuts’oane
4. Bohle ba nka karolo thapelong e khuts’oane ka memo:  
A re rapelleng...
5. Bohle ba bina sefela se sekhuts’oane ka memo:  
A re bineng...

### Selelekela:

“Molimo o tsositse Jesu bafung; ‘me ka matsatsi a mangata a iponahatsa ho ba neng ba nyolohile le eena ho tloha Galilea, ho ea Jerusalema, bao el elng lipaki tsa hae ho batho. Rona re le bolella molaetsa o molemo: seo Molimo a neng a se tsépisitse bo-ntat’a rona, o se phethahalitse ho rona, bana ba bona, ka ho tsosa Jesu bafung.”

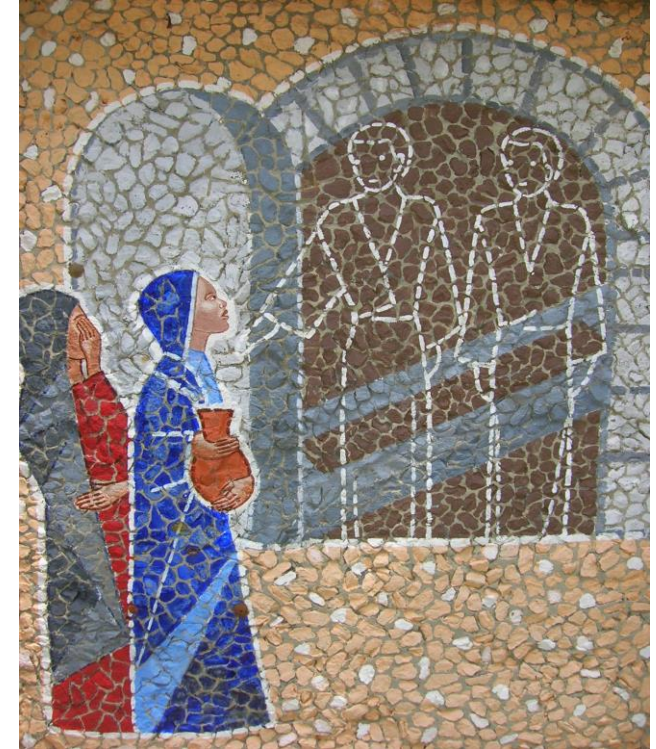
(Liketso 13: 30-33).

## 1 - Qalo Ea Pele:

### Tsoho Ea Jesu!

**Basali ba fumana setopo sa Morena Jesu se le sieo.**

*Mesong ea tsatsi le qalang beke, basali ba ile ba ea lebitleng ho isa linoko tseo ba li lokisitseng. Empa ba fihlela lejoe le tlositsoe lebitleng. Ea re hore ba kene, ba fumana setopo sa Morena Jesu se le sieo. Ea re ba sa tsielehile ke hoo, hang ba bona banna ba babeli ba eme pela bona ka liaparo tse khanyang ‘me ba re ho bona: ‘Ea phelang le matlelang hara bafu na? H’a eo mona, empa o tsohile. (Luka 24: 1-9).*



### A re rapeleng:

Morena Molimo oa rona, tsatsing la kajeno, u re buletse menyako ea bosafeleng ka Mora a inotsi oa hao ea hlotseng lefu. Ak’u re nchafatse ka Mora oa hao, rona ba ketekelang tsoho ea hae, re tle re tsohe ka khanya ea bophelo ba ‘nete. **Amen.**

### A re bineng:

U tsohile Kriste, Alleluia Alleluia X2  
Alleluia Alleluia Alleluia!

## 2 - Qalo Ea Bobeli:

### Peterose Le Johanne Ba Ea Lebitleng

*Eaba Peterose o tloha le morutuoa e mong , ba ea lebitleng. Ba fihla ba kena lebitleng 'me ba bona masela a behiloe fatse. Ha ba bona eaba ba lumela. (Johanne 20: 3-9).*

#### **A re rapeleng:**

Molimo ea lereko le sa feleng, uena ea tiisang tumelo ea sechaba sa hao ka mokete oa Paseka, ak'u re ekeletse limpho tsa hao, hore bohle re utloisise ho feta pele boholo ba hlatsuo e re hloekisitseng, khalalelo ea moea o re nchafalitseng le bohlokoa ba mali a re lopolotseng. **Amen.**

#### **A re bineng:**

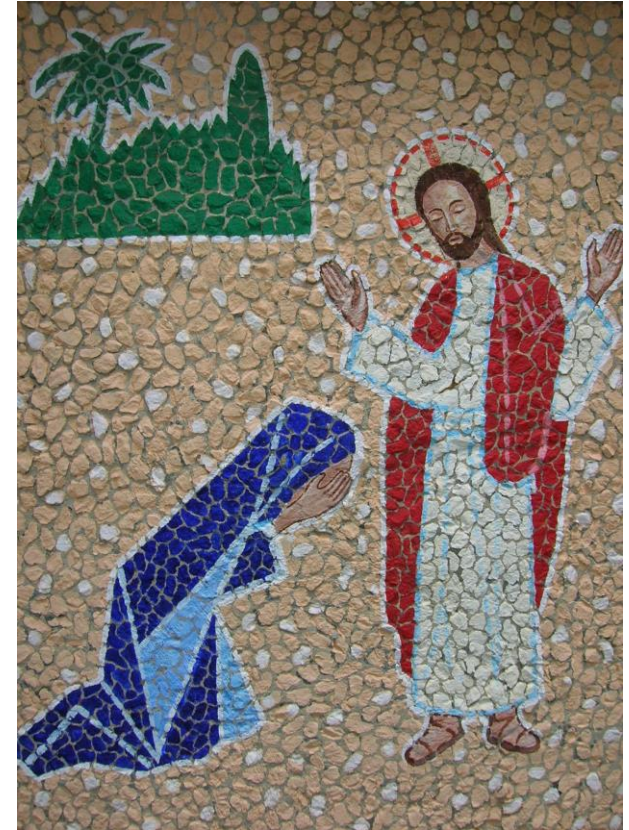
Me Johannes ka sebele,  
A hl'a siea Peterose,  
A fihla lebitleng pele. Alleluia!



## 3 - Qalo Ea Boraro:

### Jesu O Iponahatsa Ho Maria Magdalena

*Maria one a eme ka ntle pela lebitla a ntse a lla; eare a sa lla a inama ho nyarela lebitleng. Eaba o bona mageloi a mabeli a lutse moo setopo sa Jesu se neng se robalitsoe teng. A re ho eena: "Mosali, o lletlang?" A reteleha, a bona Jesu a eme; empa o ne a sa tsebe hore ke eena Jesu. Ka ho lekanya hore ke molemi, a re ho eena: "Monghali, ha eba ke uena ea mo tlositseng, mpoelle moo o 'meileng teng, ke tla mo lata. Jesu a re ho eena: "Maria!" Eena a reteleha, a re: "Rabuni!:" – ka seheberu ke hore "moruti." (Johanne 20: 11-18)*



#### **A re rapeleng**

Molimo ea matla 'ohle, re thuse ho phatlalatsa matla a Morena ea tsohileng bafung, ele hore ha re se re amohetse tsepiso ea hae sehlabelong sena, re fumane lineho tsa leholimo. **Amen.**

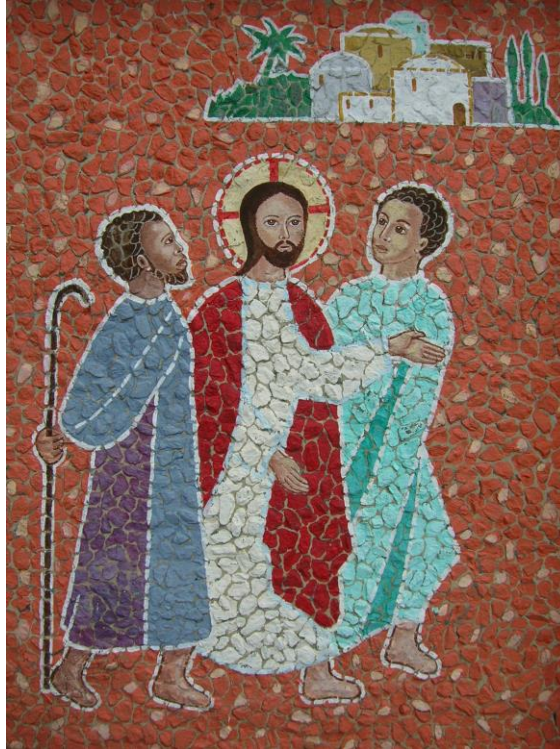
#### **A re bineng:**

Salome le 'm'a Jakobo,  
Le khaitseli ea Lazaro,  
Ba ea tlotsa setopo. Alleluia!

## 4 - Qalo Ea Bone:

### Leeto la ho ea Emmause

Ba sa buisana le ho botsana, Jesu ka sebele a ba atamela, 'me a re ho bona: "Le ntse le buisana ka taba li fe leetong la lona ha e bile le soabile hakaale?" E mong a araba a re: "Ke uena o le mong hara ba ahileng Jerusalema ea sa tsebeng taba tse hlakileng teng, tsiung tsee?" A re ho bona: "Aa! Batho ba se nang kutloisiso, ba pelo tse liehang ho lumela tsohle tse boletsoeng ke baporofeta! Eaba o qala ka Moshe, a isa ho baporofeta bohle, a ntse a ba hlalosea Mangolong 'ohle tseo a boletsoeng ka tsona. (Luka 24: 13-27).



#### A re rapeleng:

Morena Molimo oa rona, ak'u talime ka mosa sechaba sa hao seo u khahliloeng ke ho se nchfatsa ka limpho tsa leholimo. Etsa hore 'mele eo u e bopetseng tsoho ea letlotlo le sa senyeheng, e finyelle bophelong bo sa feleng. **Amen.**

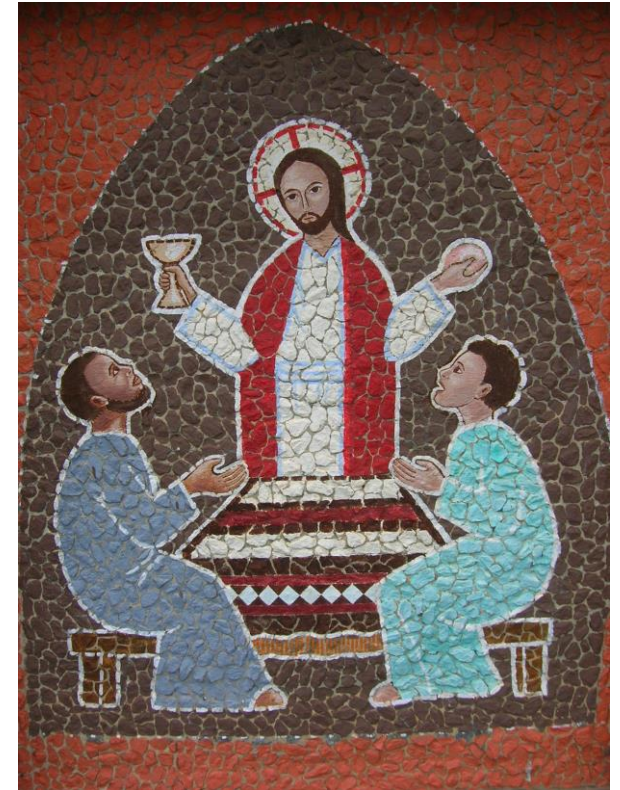
#### A re bineng:

U tsohile Kriste, Alleluia Alleluia X2  
Alleluia Alleluia Alleluia!

## 5 - Qalo Ea Bohlano:

### Barutuo a Ba Tseba Jesu Tl'hohonolofatsong Ea Bohobe

Ba atamela motsana oo ba eang ho oona; empa Jesu a ea joaloka hoja a fetela pele. Ba mo qophella, ba re: hlola le rona, hobane e se e le mantsiboea, le letsatsi le se le rapame. A ba a kena, a lula le bona. Eitse ha a lutse lijong le bona a nka bohobe, a boka, a bo ngoatha, a ba nea bona. Eaba mahlo a bona a tutuboloha, 'me ba mo tseba; empa a ba nyamella. Eaba ba botsana, ba re; ana lipelo tsa rona li ne li sa che kahare ho rona, ha a ntse a bua le rona tseleng, a re hlalosea Mangolo na?" (Luka 24: 28-35).



#### A re rapeleng:

Hauhela balumeli ba hao, Morena, ba ekeletse melemo ea mohau oa hao, u ba tsitsise tumelong, tsépong le leratong, e le hore ba falimehele ho boloka melao ea hao ka mehla. **Amen.**

#### A re bineng:

Utloa, Jesu o ntse a re:  
Bohobe boo ke 'mele oa ka.  
Ha a bua labobeli,  
O re: Vein eke mali a ka.

## 6 - Qalo Ea Botsélela

### Jesu O Itlhahisa Ho Barutoa Ba Hae

Ba sa le lijong, Jesu a ema hara bona ka sebele, a re: “Khotso e be le lona!ba mpa ba tsóha, ba tsába haholo, eka ba bona sethotsela. A re ho bona: “Le tsóhelang? ‘me mehopolo e joalo e hlahelang lipelong tsa lona? “A ba bontsá liata le maoto a hae, a re: “Sethotsela ha sena nama le masapo joakaha le mpona ke na le oona.”’Me kahobane ba ne ba ntse ba belaela ka baka la ho makala, a re ho bona: “Na le na le ntho e jeoang na?”Ba mo fa hlapi e besitsoeng ‘me a ja pela bona. (Luka 24: 36-43).

#### A re rapeleng:

Lula le sechaba sa hao, oho Morena. Etsa hore rona bao u re fepileng ka limpho tsa leholimo re hlobole bophelo ba khale, re apare bo bocha. **Amen.**

#### A re bineng

Moo ho lutseng barutuo,  
Ha hlaha Kriste ka nama,  
A re: Khotso hle ho lona. Alleluia!



## 7 - Qalo E a Bosupa:

### Jesu O Fa Barutuo Ba Hae Matla A Ho Tsóarela Libe

Jesu a boela a re ho bona: “Khotso e be le lona! Joalokaha Ntate a nthomile, le’na kea le roma. Eitse hobane a bue joalo, a bululela ho bona; a re: Amohelang Moea O Halalelang; bao le tla ba tsóarela libe ba tla tsóareloa tsona; bao le tla ba balla libe, bat la balloa tsona. (Johanne 20: 21-23).

#### A re rapeleng:

Morena Molimo oa rona, uena bophelo ba balumeli, letlotlo la ba ikokobetsang le lehlohonolo la ba lokileng, mamela ka mosa lithapelo tseo re li etsang ka boikokobetso; etsa hore ka ho tseba lipallo tsa mohau oa hao, re tlale bongata ba lineho tsa hao ka mehla. **Amen.**

#### A re bineng:

E-eang ka lefatse lohle,  
Le ba bolelle Evangeli X2  
E-eang, ha ba luimela



E-eang le bakolobetse  
Ka lebitso la Ntate le la  
Moea o halalelang!

## 8 - Qalo Ea Borobeli:

### Jesu O Netefatsa Tumelo Ea Thomase

Thomase, o ne a le sieo ha Jesu a ne a le teng 'me o ile a hana ho lumela seo barutuoa baneng ba mo bolella sona. Kamorao ho matsatsi a robeli barutuoa ba ne ba boetse ba le tlung le Thomase a ena le bona. A re ho Thomase: "Tlisa monoana oa hao mona, 'me o talime liatla tsa ka,; ntsa letsoho la hao , o le kenye lehlakoreng la ka, 'me o se ke oa ba ea sa lumeleng, o mpe o be ea lumelang. (Johanne 20: 24-29)



#### A re rapeleng:

Morena Molimo oa rona, uena eo ka tsoho ea Kriste u re buseletsang bophelo bo sa feleng, re thuse rona sechaba sa hao hore re eme re tiile tumelong le tsepong, e le hore re se qea-qee ho phetha litaelo tsa hao, uena mohloli oa tsohle.

**Amen.**

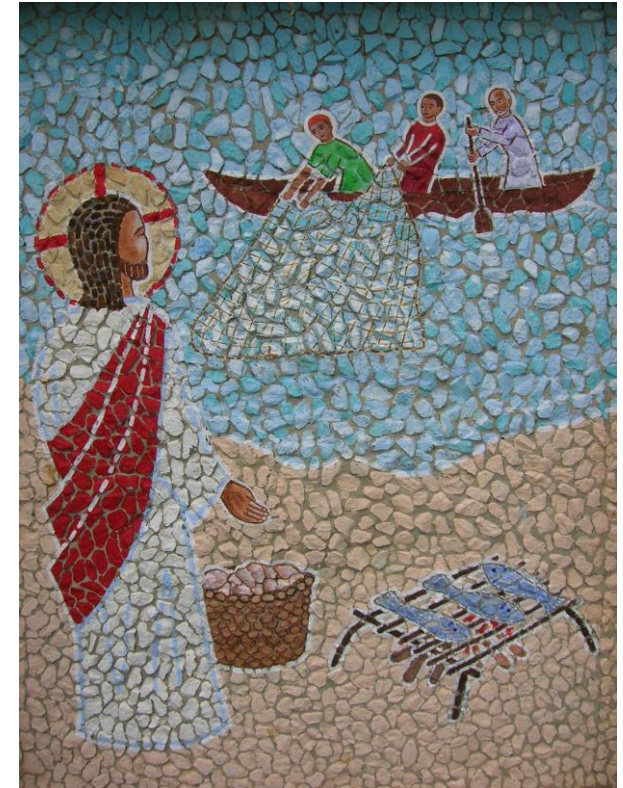
#### A re bineng:

Thomas a bona maqeba.  
A khumamela Morena,  
A re: U Molimo oa ka. Alleluia!

## 9 - Qalo Ea Borobong:

### Jesu O Hlaha Ho Barutuoa Ba Hae Leoatleng La Tiberiase

Simone Peterose a re ho bona: "Ke ea ho tsóasa lihlapu." Ba re ho eena: "Le rona re ea le uena." Eaba ba kena seketsoaneng; empa ha ba ka ba tsóasa letho bosiuung boo. Eitse kameso, Jesu a tsóha a ema lebopong; empa barutuoa ba ne ba sa tsebe hore ke Jesu. Eaba Jesu o re ho bona: "Metsoalle, a na le tsóasitse letho na?" Ba mo araba ba re: "Che!" Eaba o re ho bona: Äkhelang letlooa lehlakore le letona la seketsoana, 'me le tla li bona. Eaba ba le akhalela, 'me ba sitoa ho le hula ka baka la bongata ba lihlapu. Morutuoa ea ratoang ke Jesu a re: "Ke Morena!" (Johannes 21: 1-19)



#### A re rapeleng:

Morena Molimo, ke uena ea etsang hore balumeli ba hao ba be pelo-'ngoe. Ak'u re nehe ho rata seo u re laelang sona le ho lakatsa seo u re ballang sona, e le hore har'a lintho tse feto-fetohang tsa lefatse, lipelo tsa rona li khoramele moo thabo ea 'nete e leng teng. **Amen.**

#### A re bineng:

Jesu ke eena oa mathomo,  
Jesu ke eena oa mafelelo,  
Ke Alpha le Omega! X2

## 10 - Qalo Ea Leshome:

### Jesu O Roma Peterose Ho Ba Moalosi Oa Mohlape Oa Hae, E Leng Kereke.

*Jesu a re ho Simone Peterose: Simone, morá Jona, na o nthata haholo ho fetisa bana ba?" A re ho eena: "'E, Morena, oa tseba hoba ke a o rata." Jesu a re ho eena: "Álosa linku tsa ka. (Johanne 21: 15-18)*

#### **A re rapeleng:**

Oho Molimo ea matla 'ohle, etsa hore re hlole ka thabo e kholo matsatsing ana a ho tlotlisa Kriste ea tsohileng bafung. Seo re ikhopotsang sona, re ke re se phele ka mehla ka liketso tsa rona.

**Amen.**

#### **A re bineng:**

Roma 'na X2

Roma 'na lichabeng!



## 11 - Qalo Ea Leshome Le Motso O Mong:

### Thomo Ea Barutuoa

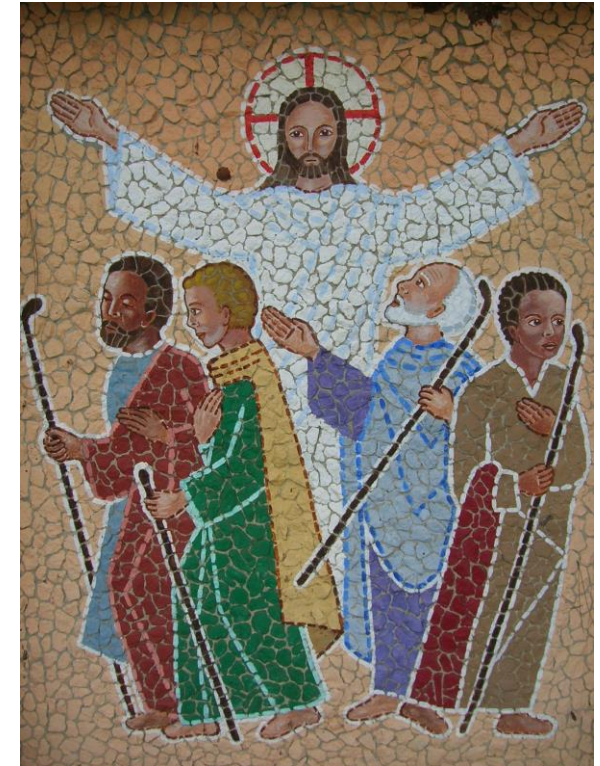
*A re ho bona: "E-eang lefatseng lohle, le phatlalatse libopuoá tsohle molaetsa o molemo. Ea tla lumela, a be a kolobetsoe, a tla pholosoá; athe ea sa tl'o lumela o tla tsuoá. Lipontsó tse tla felehetsa ba lumetseng ke tsena he: ba tla leleka bademona ka lebitso la ka, ba bue lipuo tse ncha, ba tsoare linoha ka matsoho; 'me leha ba ka noa chefo efe kapa efe, e ke ke ea ba etsa letho; ba tla bea bakuli matsoho, 'me ba tla fola." (Mareka 16: 15-19).*

#### **A re rapeleng:**

Morena Molimo, uena ea re thabisang selemo le selemo ka mokete oa tsoho ea Morena oa rona, ak'u etse hore mekete eo re e etsang mona lefatseng e re lokisetse ho honyella nyakallong e sa feleng. **Amen.**

#### **A re bineng:**

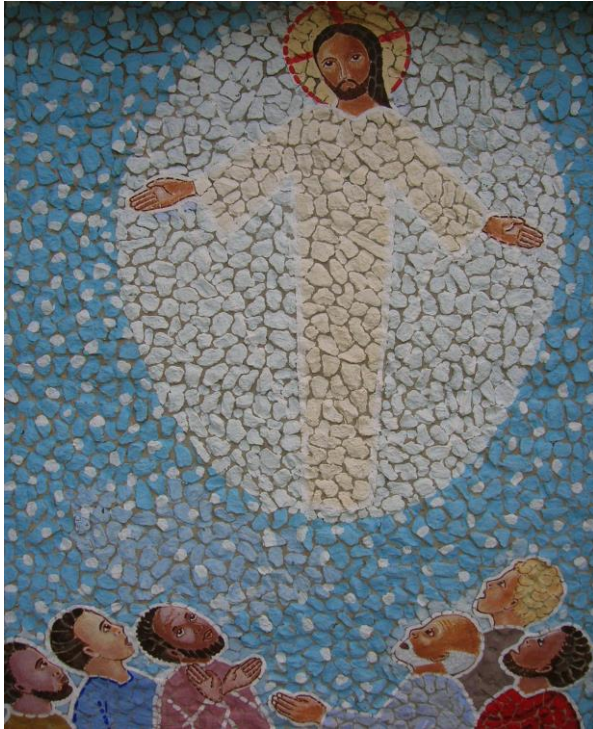
E-eang ka lefatse lohle,  
Le ba bolelle Evangeli X2  
E-eang ha ba lumela  
E-eang le bakolobetse  
Ka lebitso la Ntate le la  
Mora le la Moea o halalelang!



## 12 - Qalo Ea Leshome Le Metso E 'Meli:

### Jesu O Nyolohela Leholimong

Joale Jesu a ba isa kantle ho motse, a ea le bona ho ea fihla Bethania, a phahamisa matsoho, a ba hlohonolofatsa. Eare ba sa ntse ba talimile leholimong ha a ntse a nyoloha, bonang, banna ba babeli, ba liaparo tse tsoeu, ba ema pel'a bona. Eaba ba are: "Banna ba Galilea, le emetse'ng le shebile leholimong? Jesu enoa ea nyolletsoeng leholimong, a tloha har'a lona, o tla boela a khutla ka mokhoa oo le 'moneng a nyolohela leholimong ka oona." (Luka 24: 50-52 / Liketso 1: 9-11)



#### A re rapeleng:

Molimo ea matla 'ohle, ak'u re fe thabo e halalelang, re tle re u lebohe ka nyakallo, hobane nyolohelo ea Kriste Mora oa hao ke tsholo ea rona. Moo Moetapele oa rona a keneng teng ka letlotlo, ke moo tsepo ea rona e re lebisang teng, rona litho tsa 'mele oa hao. **Amen.**

#### A re bineng:

Morena Molimo oa rona oa nyoloha,  
Oa nyoloha Oa nyoloha,  
Hara litlatse!. X2

## 13 - Qalo Ea Leshome Le Metso E Meraro:

### Maria Le Baapostola Ba Lebella Moea O Halalelang

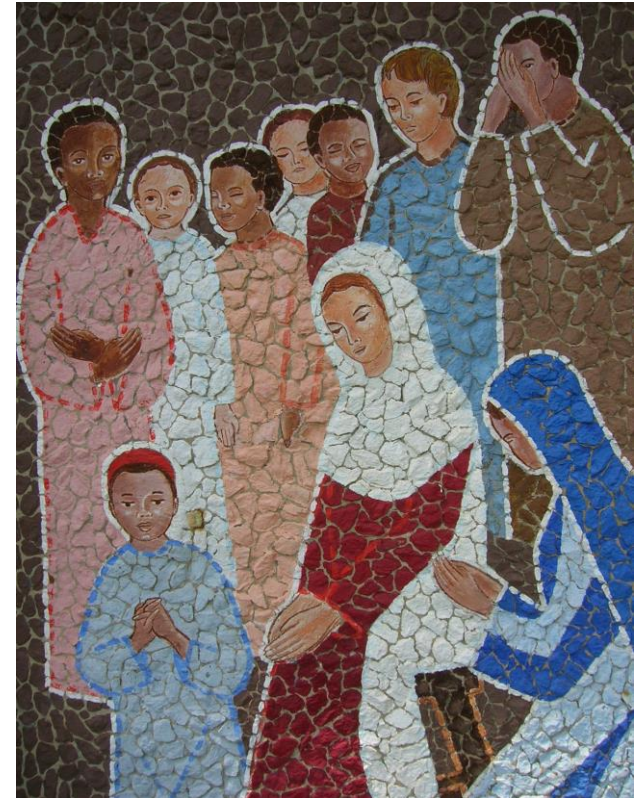
Eaba ba khutlela Jerusalema ka kamoreng e kaholimo moo baneng ba lula teng. Baba kaofela, ba e-na le basali, le Maria 'm'a Jesu, ba tiisetsa thapelong ka maikutlo a le mang. (Liketso 1: 12-14).

#### A re rapeleng:

Morena Molimo, uena eo Mora oa hao, ha a nyolohela leholimong, a ileng a tsepisa ho romela Moea o Halalelang ho baapostola ba hae, ak'u etse hore joaloka ha ba ile ba amohela lineho tsa mefuta-futa tsa thuto ea leholimo, le rona re fumamtsoe lithuto tsa moea. **Amen.**

#### A re bineng:

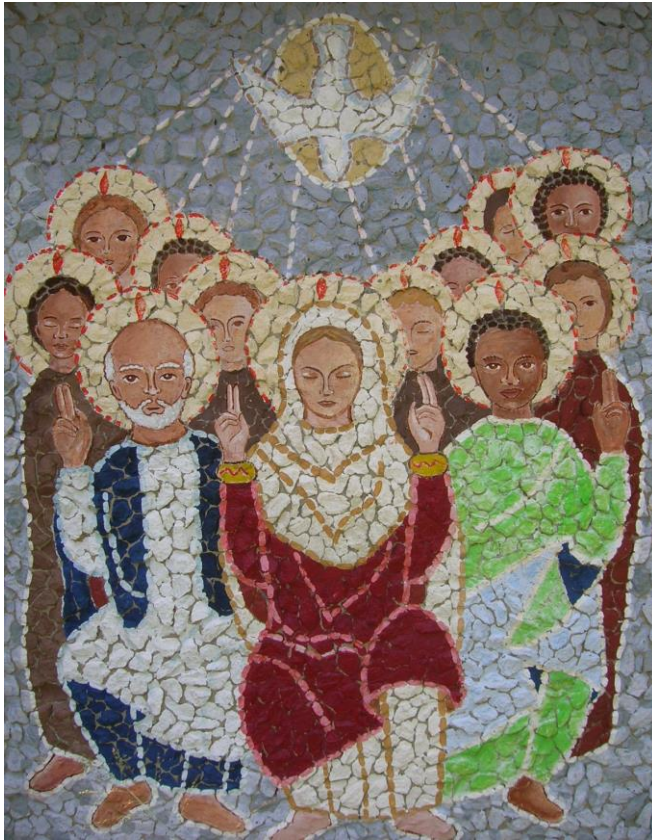
Romela moea oa hau  
Morena,  
U nchafatse sebopeo sa lefatse.



# 14 - Qalo Ea Leshome Le Metso E Mene:

## Pentekonta - Ho tla Ha Moea O Halalelang

Ha letsatsi la Pentekonta le fihla, bohle ba ne ba phuthehetse sebakeng se le seng. Hang-hang ha e-ba le molumo o tsoang leholimong, o kang oa moea o matla, 'me oa tlala ntlo eohle eo ba neng ba lutse ka ho eona. Ba bona ho hlaha maleme a kang malakabe; a arohana, a lula ka bonngoe holim'a e mong le e mong oa bona. Bohle ba tlala Moea o Halalelang, 'me ba qala ho bua ka lipuo lisele, kamoo Moea o neng o ba buisa kateng. (Liketso 2: 1-42).



### A re rapeleng:

Morena Molimo oa rona, moketeng ona oa Pentekonta u halaletsa Kereke eohle ea hao lichabeng tsohle le linaheng tsohle. Ak'u tsele lineho tsa Moea O Halalelang lefatseng lohle ka bophara ba lona, 'me seo u neng u se rute mohla monene ka baapostola u se ntsetse pele le kajeno lipelong tsa rona balumeli ba hao. **Amen.**

### A re bineng:

Theoha Moea X3

Moea o Halalelang!

Bua lentsoe X2

Bua lentsoe le halalelang!

## Sepheo Sa Buka Ena

Jesu o ile a etsa mehlolo e meng e mengata moo barutuoa ba hae ba ntseng ba bona, e sa ngoloang bukeng ena. Empa tsena li ngotsoe hore le tle le lumele hore Jesu ke Kriste, Mora oa Molimo, le hore ka ho lumela le tle le be le bophelo ka letlotlo la hae. (Johannes 20: 30-31).

### U Ithabele (Regina Caeli)

U ithabele, Mofumahali oa leholimo. Alleluia.  
Hobane eo u lumeletsoeng ho mo tsoala. Alleluia.  
O tsohile bafung joalokaha a n'a boletse. Alleluia.  
U re rapelle ho Molimo. Alleluia.  
Oho Movirigo Maria, u thabe, u nyakalle: Alleluia.  
Hobane Morena o tsohile bafung ruri. Alleluia.

### A re rapeleng

Oho Molimo, uena ea tiisang nyakallo lefatseng ka tsoho ea Mora oa hao Morena oa rona Jesu Kriste, re u rapela ka Maria Movirigo 'M'a hae, hore re fuoe lithabo tsa bophelo bo sa feleng; ke seo re se kopang ka Eena enoa Morena oa rona Jesu Kriste. Amen.

### Mongoli

Father Pierre de la Croix, moprista oa Mofora, ea qetileng nako e kholo ea bophelo ba hae a le Afrika, o na le mpho ea bohlokoa eo ka eona a phatlalatsang Evangeli ka mokhoa oa se le hae ka eona. O tsebahala haholo ka ho penta le ho taka litsoantso, mekhabiso ena e ka bonoa likerekeng tse ngata haholo-holo Rwanda le Gauteng.