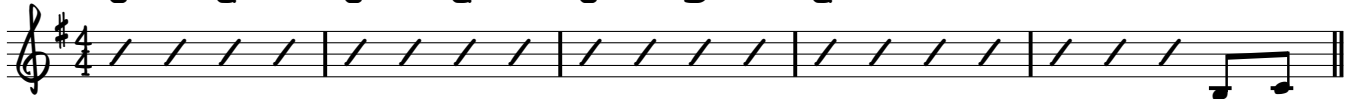


# A Hymn to Don Bosco

P. Buzon

**Intro**

C G C G C D G



Is there

**Str.**

G G<sup>maj7</sup>/F# F D(SUS4) D7



pro-mise for the young\_ to-day? Is there a rea-son to live on?\_ Think of  
hea-ven for the young\_ to-day. There is free-dom to en-joy.\_ And the

G G<sup>maj7</sup>/F# F D(SUS4) D7



all the was-ted mo-ments; will they ev-er be re-stored?\_ Is there  
vis-ions of. to-mor-row give a sense of liv-ing on.\_ There are

E<sub>m</sub> E<sub>m</sub>(<sup>maj7</sup>)/D# E<sub>m</sub><sup>7</sup>/D A/C#



mean-ing in these emp-ty shows? Nev-er will we find that peace,\_ let's not pre  
depths of friend-ship to ex-plore. And the call of ser-vice brings\_ a las-ting

A<sub>m</sub> C<sup>7</sup> A<sub>m</sub><sup>7</sup>



tend. We need some-one who can lead us to the  
joy. We need some-one who can lead us to the

F D(SUS4) 1. D7 2. D7



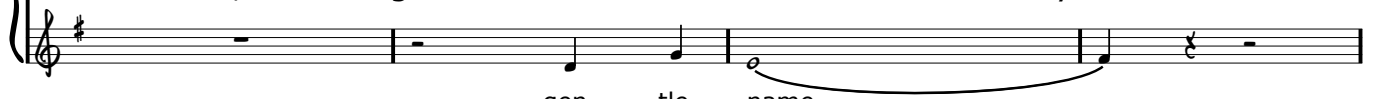
way!\_ There is We call Don  
way!\_

**Ref.**

G G<sup>maj7</sup>/F# C D7



Bos-co, a gen-tle name for child-ren of\_ to-day.\_ We call Don



gen-tle name\_

G G<sup>maj7</sup>/F# C D7



Bos-co, a shi-ning flame\_ that sends the glooma-way.\_ Be-hold a



shi-ning flame\_

G Gmaj7/F# G7/F Cm7 (hold chord)

fath-er's hand, a friend's em-brace that light-ens your cares. Your

friend's em - brace

C G C G C D7 G

bur-den's bear when some-one shares his heart for the young of to-day—

**Interlude** G Gmaj7/F# F D7

uh uh

D.S. AL CODA

**Coda** G G Gmaj7/F# C D7 (NO REPEAT)

We call Don Bos-co, a gen-tle name for child-ren of to-day. We call Don

gen - tle name

G Gmaj7/F# C D7

Bos-co, a shi-ning flame that sends the glooma-way. Be-hold a

shi - ning flame

G Gmaj7/F# G7/F Cm7 (hold chord)

fath-er's hand, a friend's em-brace that light-ens your cares. Your

friend's em - brace

C G C G C D7 G G

bur-den's bear when some-one shares his heart for the young of to-day—

